

FREE TRIAL - Survey Positioning Software

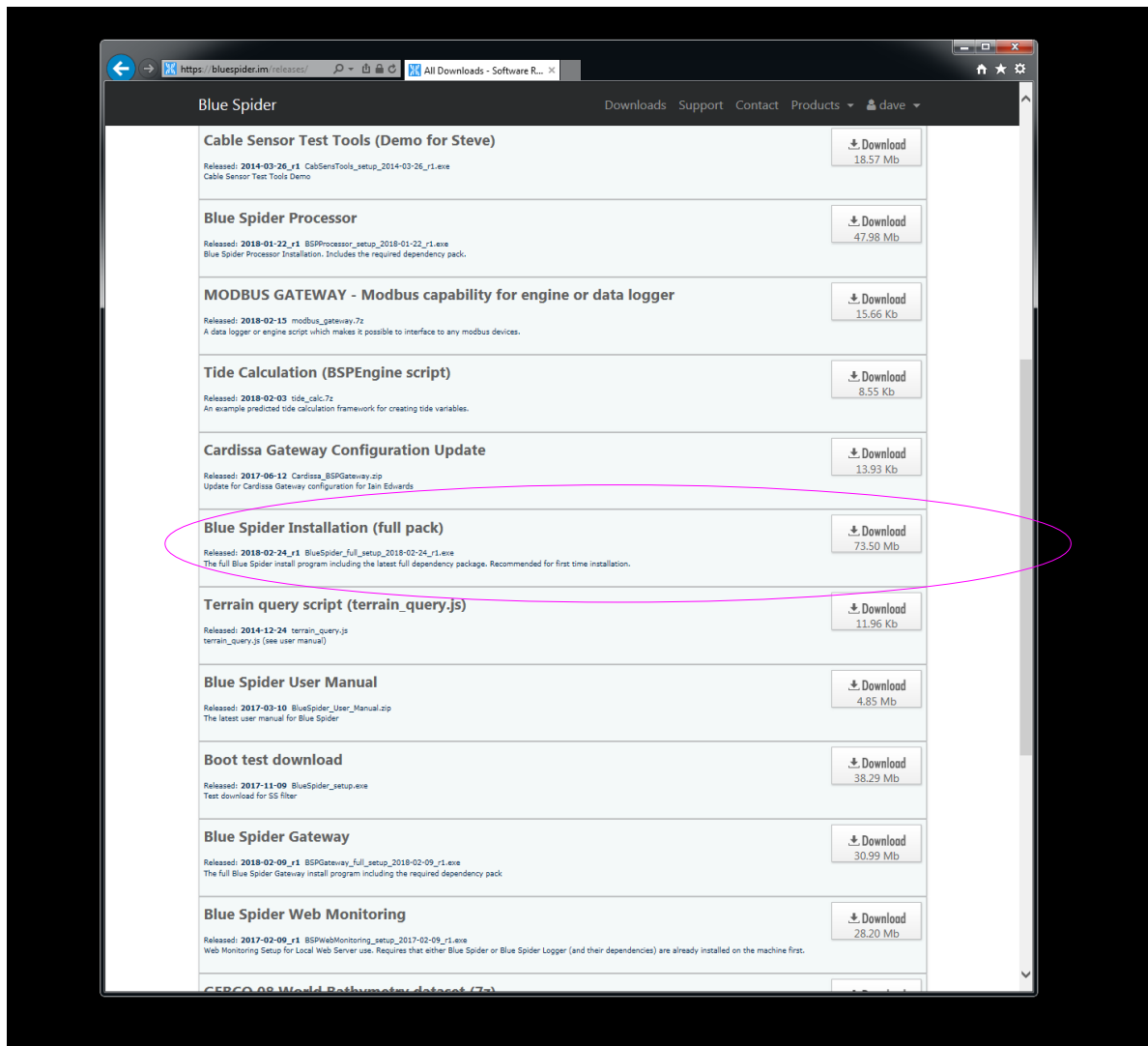
An invitation to trial Blue Spider at no charge, risk or obligation.

To evaluate Blue Spider you will first need to register on our site as a user.

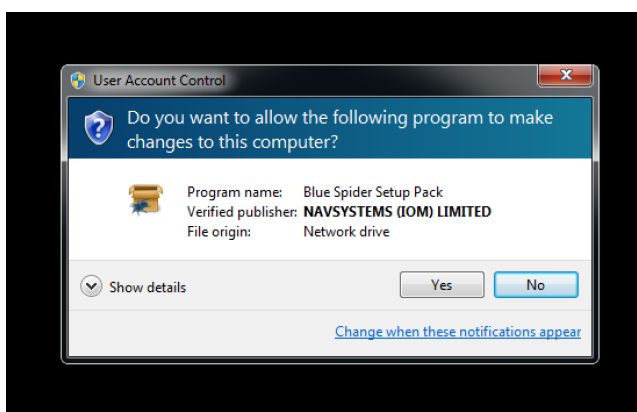
Once you have done this then simply fill out the online request for evaluation form and we will send you a PIN code so you can activate your license.

Once we have verified your account and sent you a PIN code we will grant you access to the downloads area so you can get your hands on the software.

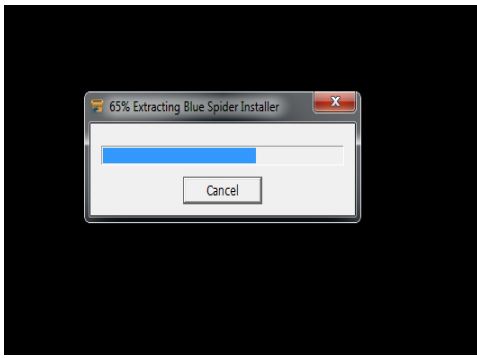
In the downloads area on the website you will see a list of available downloads. You wont see the same titles as shown here as the titles visible to you will depend on your login permissions. You will see one called **Blue Spider Installation (full pack)** and this is the one you need to download.



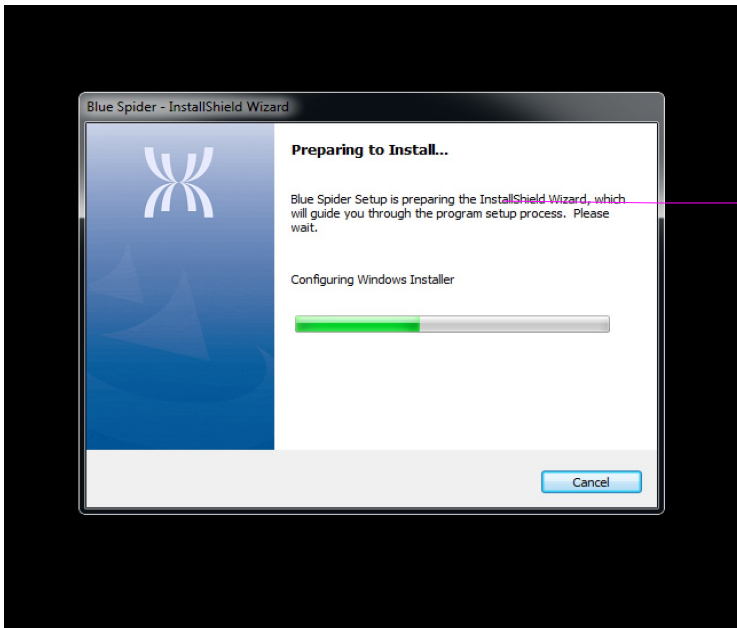
Once downloaded you need to run the installer.



You will need administrator privileges on the computer where you are installing Blue Spider.

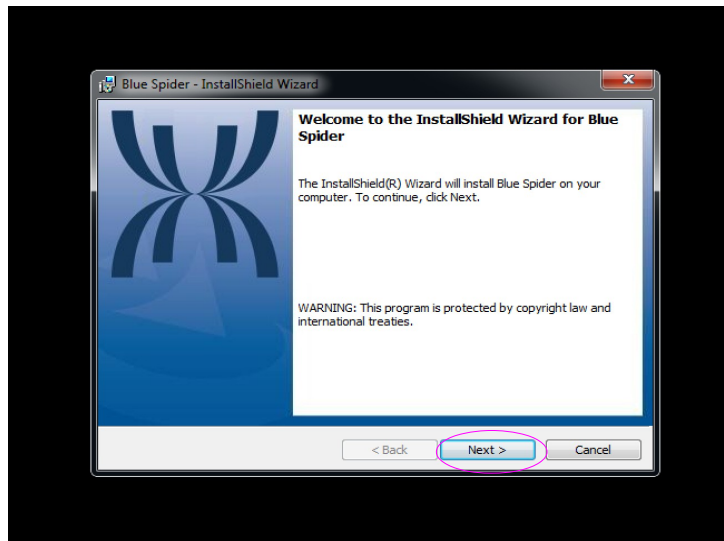


The installer first needs to extract itself which may take a few seconds

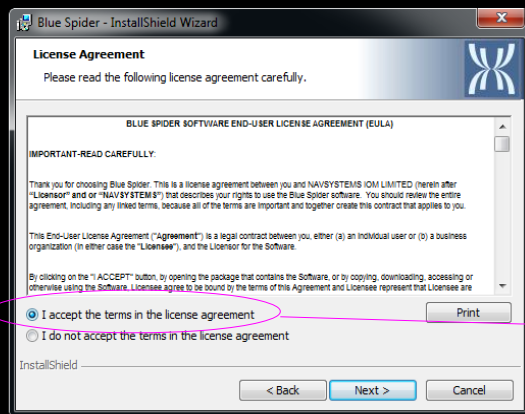


And then a few more seconds...

Finally you will see the following

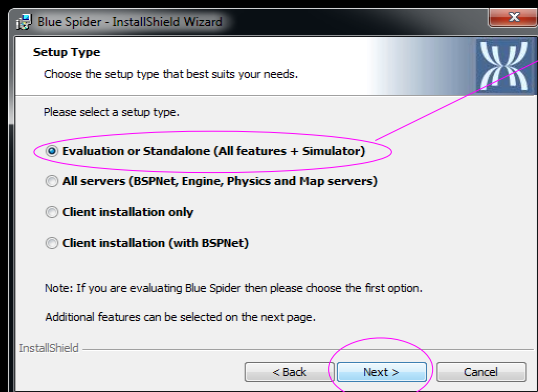


You can press **Next** here



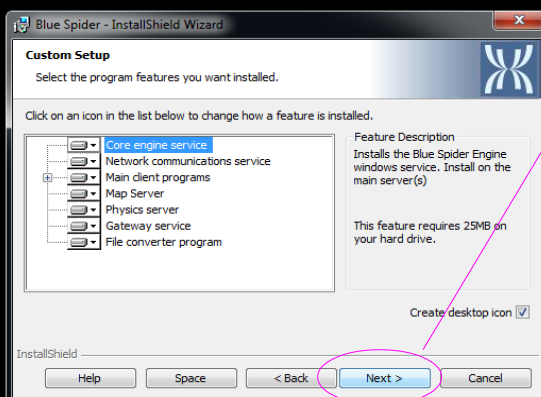
Next - You have to accept the license agreement but there are no obligations for evaluators.

Then press **Next**



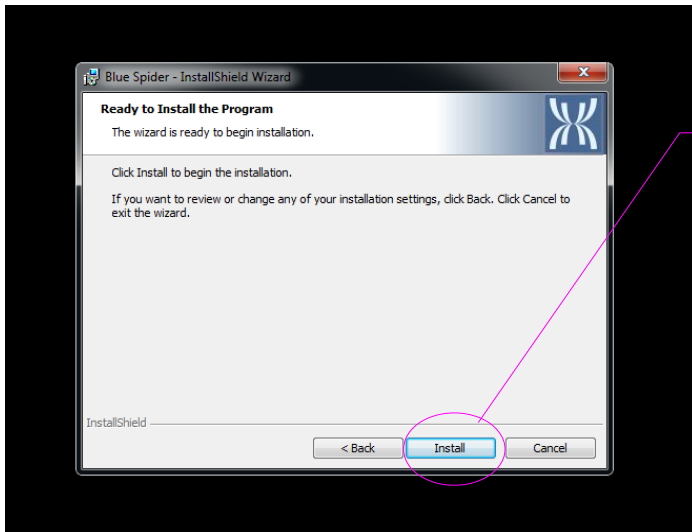
Choose the first option. Its the default for a first time install anyway.

Then press **Next**



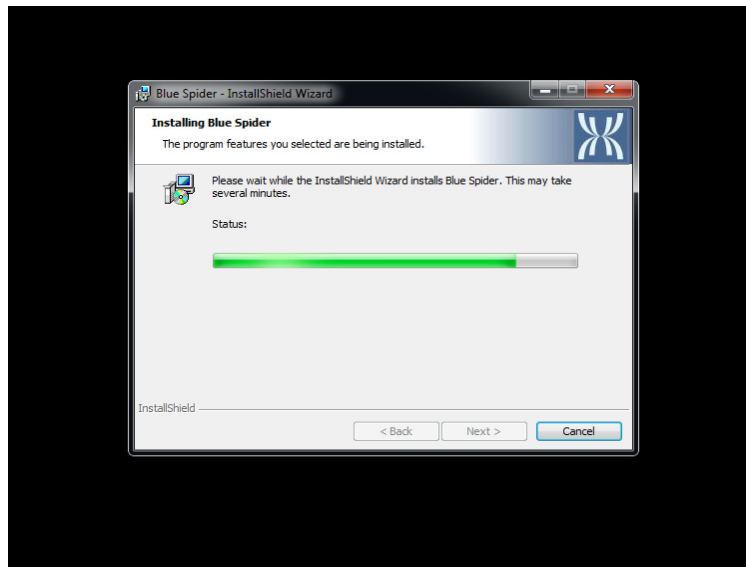
You get some additional options here but we don't recommend changing anything here if you're evaluating.

Just press **Next**

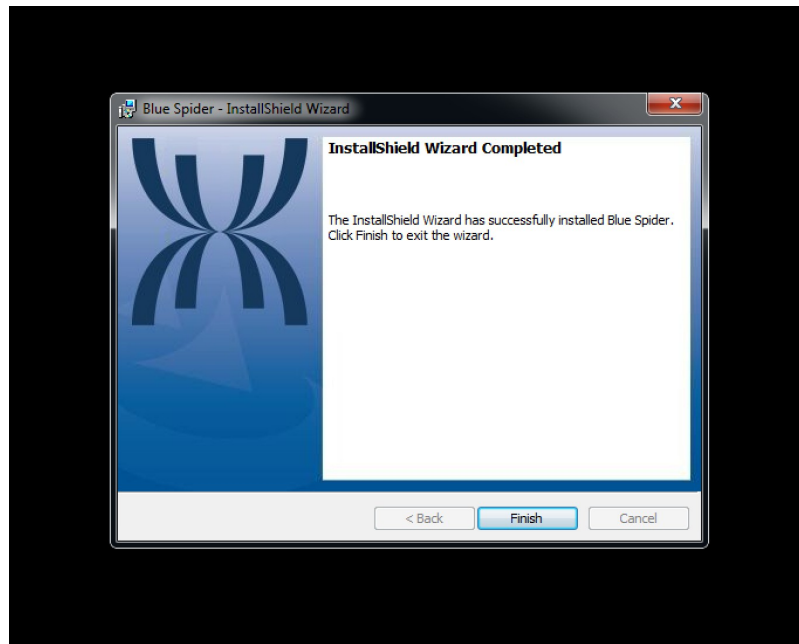


Just press **Install**

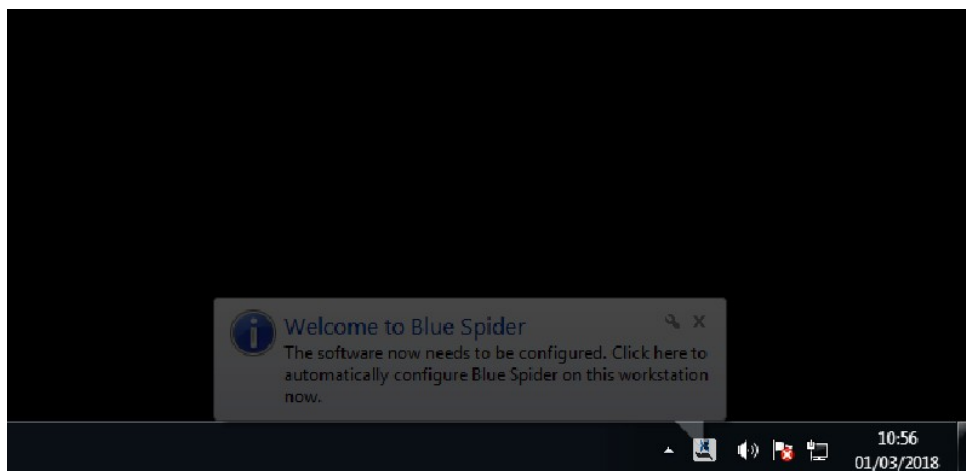
The installation will then run. It may take a little while...



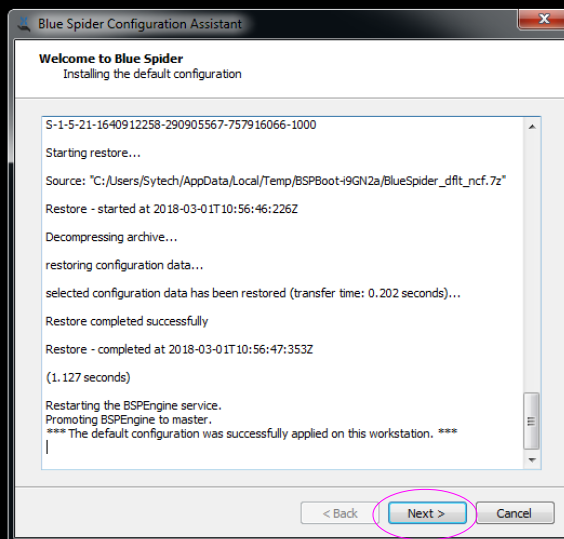
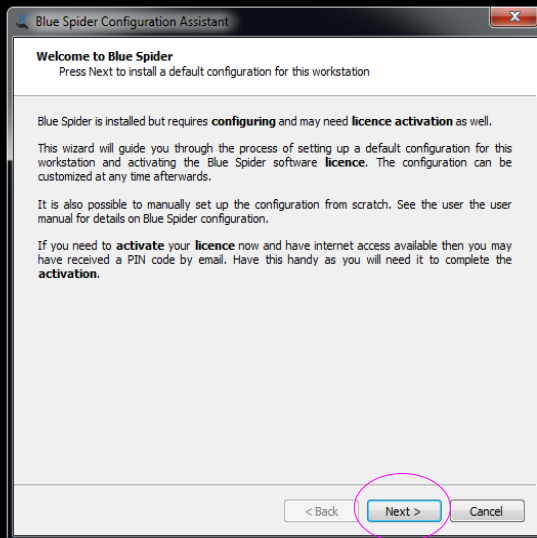
When the install has completed just press **Finish**

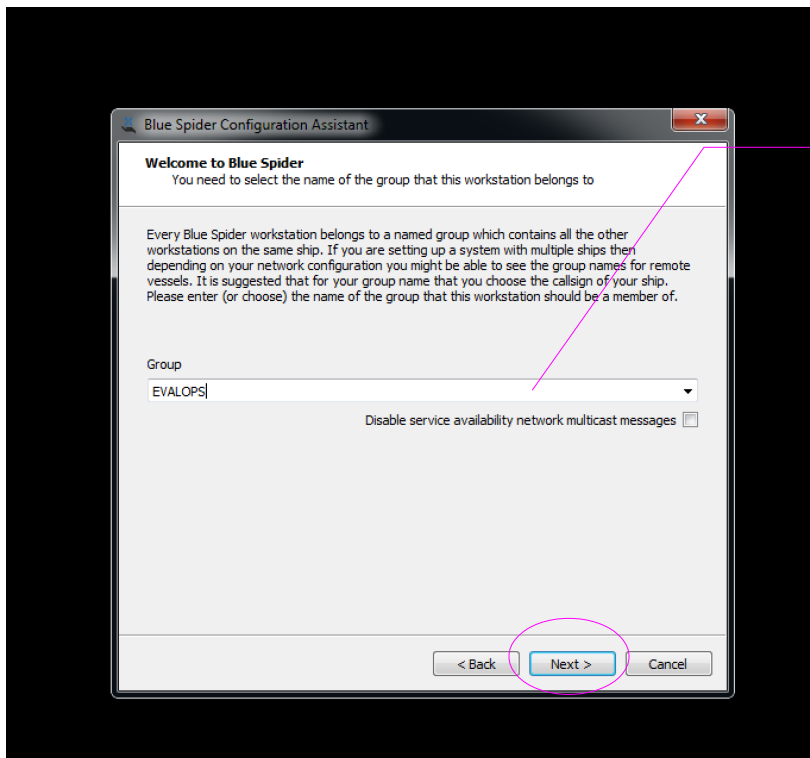


A short while after the install completes a message should appear in the tooltray.
Wait for this to appear and then...
Click on this message!!!



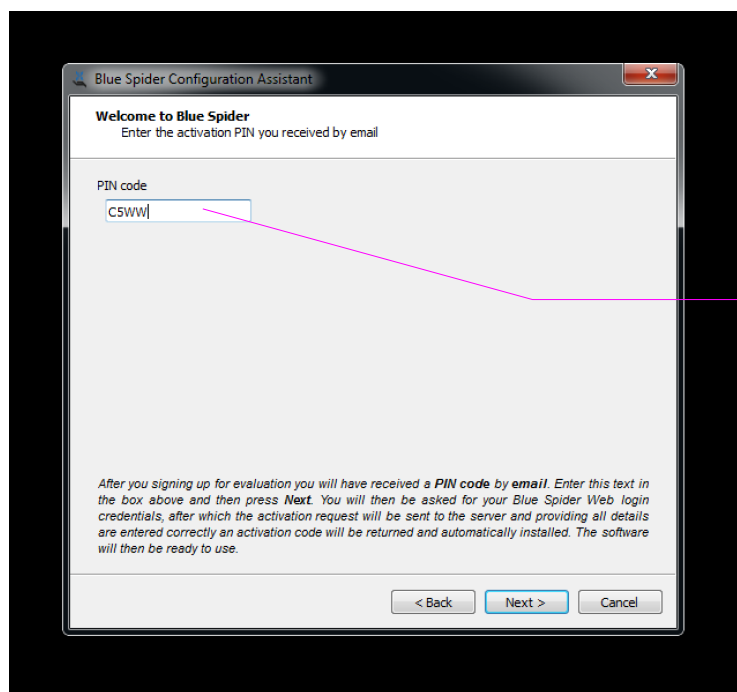
This will start the configuration assistant which will set up a default configuration suitable for evaluation. The configuration assistant will also allow you to activate your license and without this important step many features will be disabled.





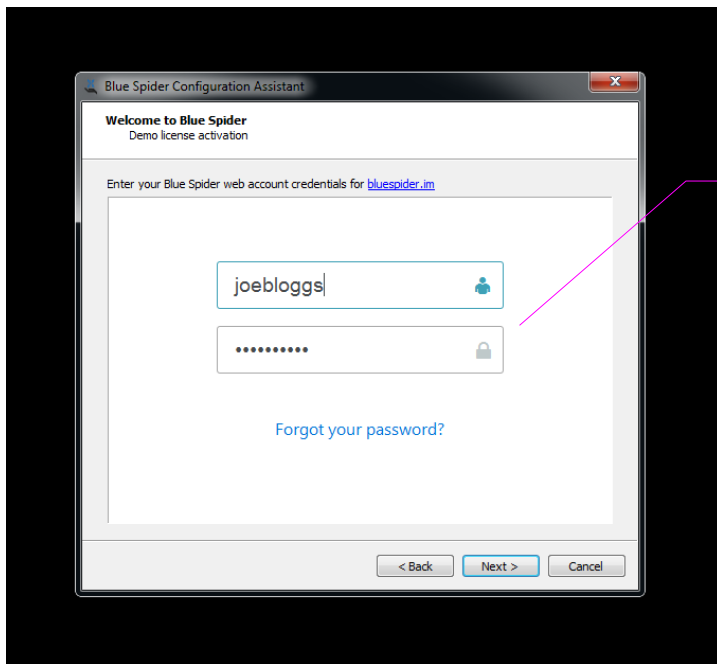
You need to enter a group name in this box. Every workstation must belong to a group even if there is only one workstation. You could use your ships name here or anything really but it cant be blank.

When you requested evaluation you should have been sent a pin code. The PIN code makes it possible for you to help yourself to online activation of the Blue Spider license.



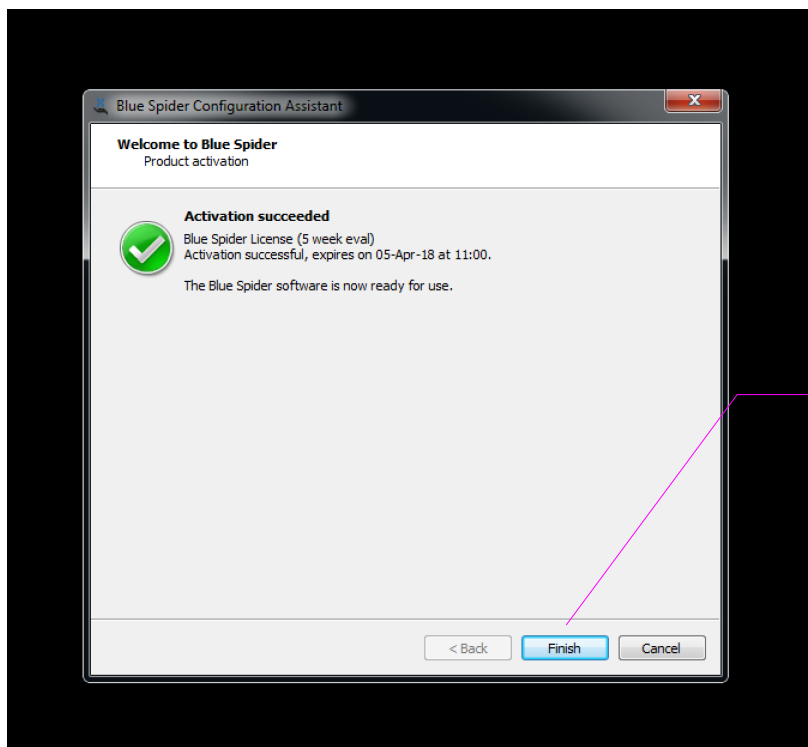
Enter your PIN code and press **Next**.

You will then be asked to login with your username and password.



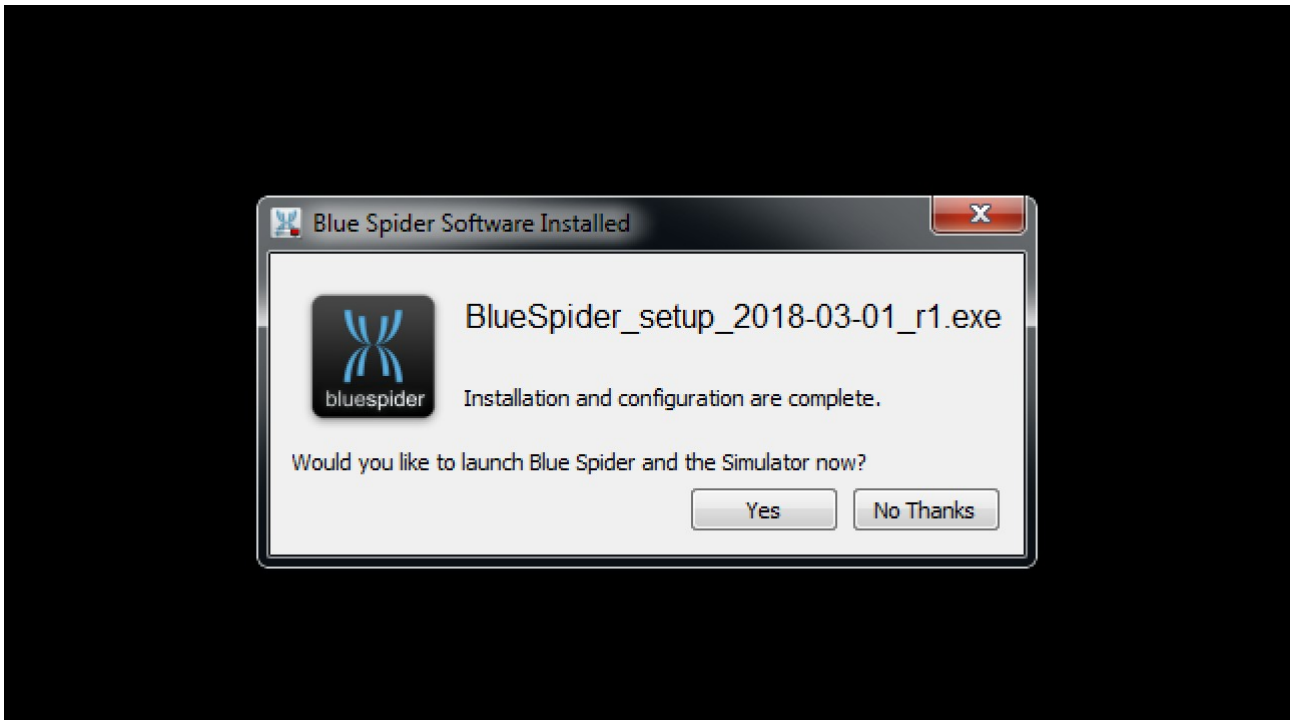
Enter your login credentials and press **Next**

Hopefully you should then receive a message like this one...



You can then press **Finish**

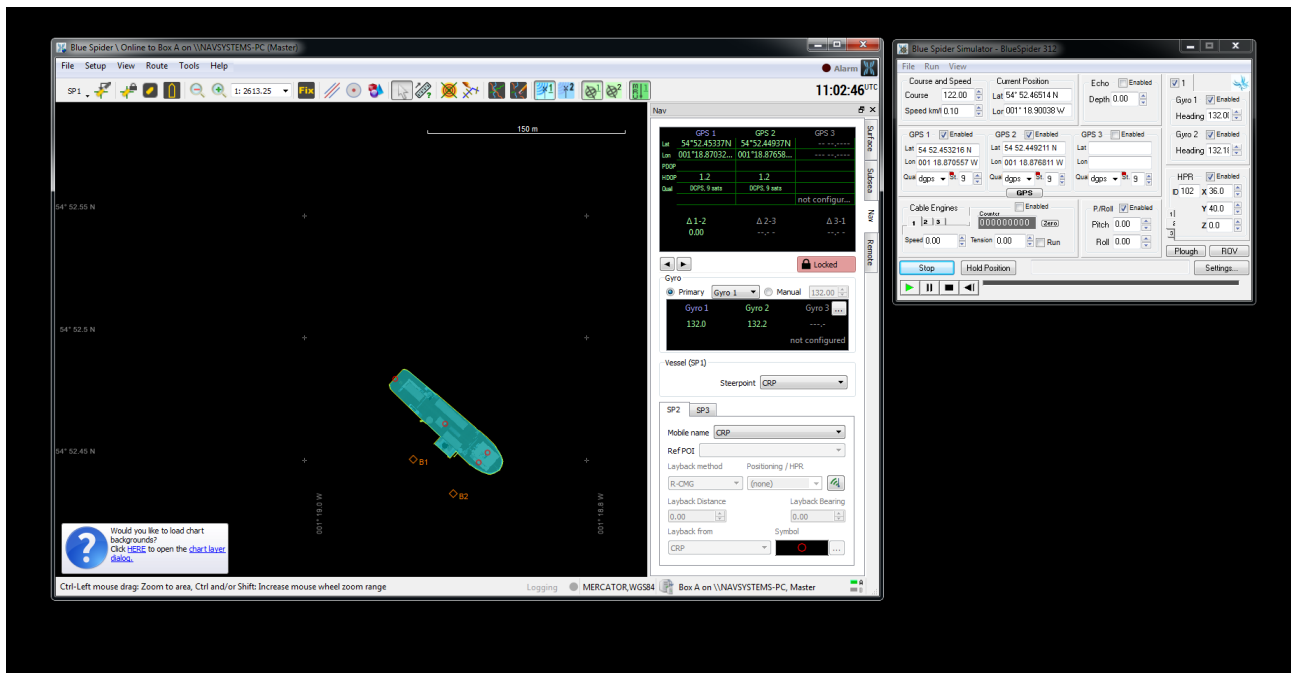
At this point you will be asked if you would like to run Survey Positioning and the Simulator



Choose **Yes**

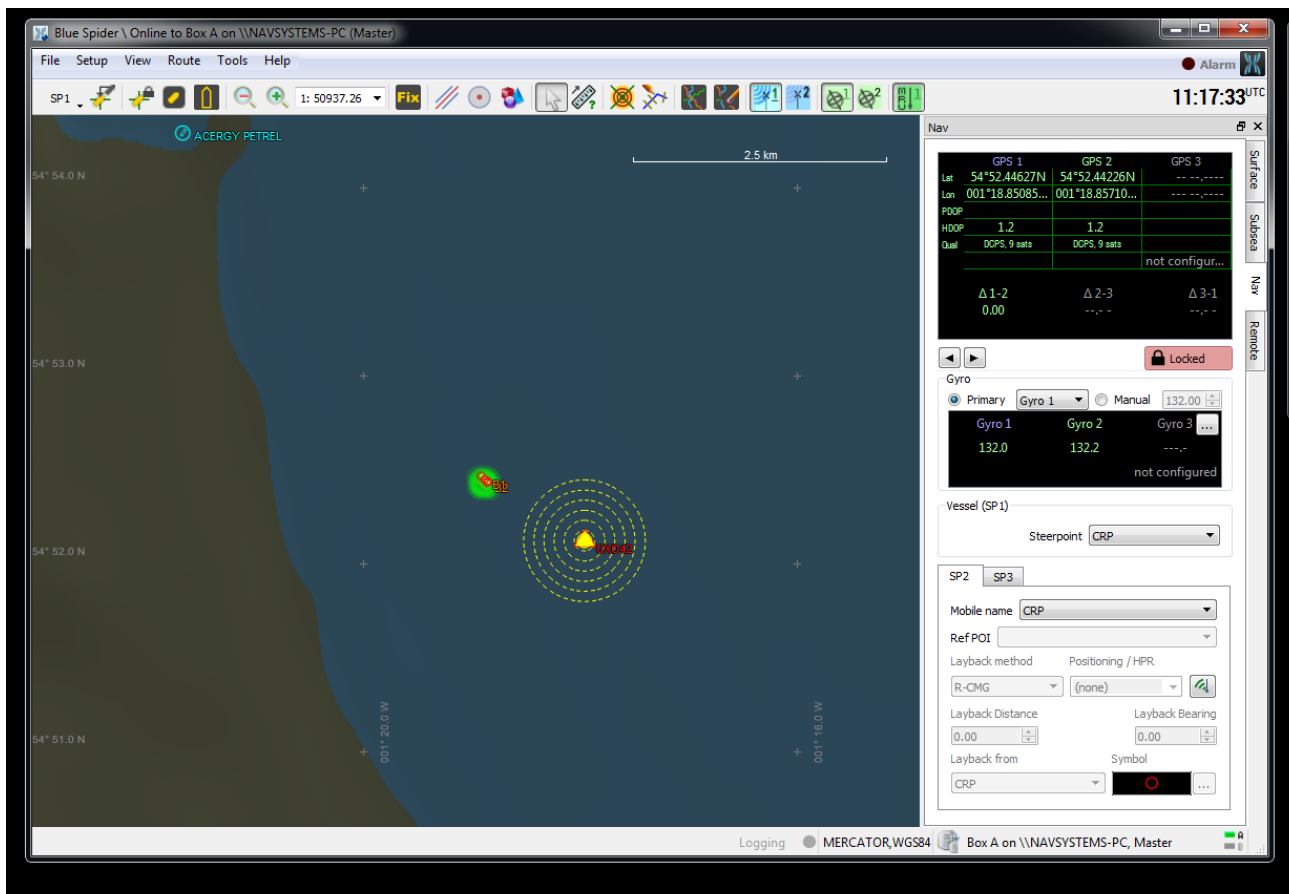
Note: later when you run survey positioning the simulator wont automatically start and you will have to start it yourself and press the simulator **Run** button in order to ensure that data is present

At this point you have successfully installed and configured Blue Spider.
There is still more that you can do..



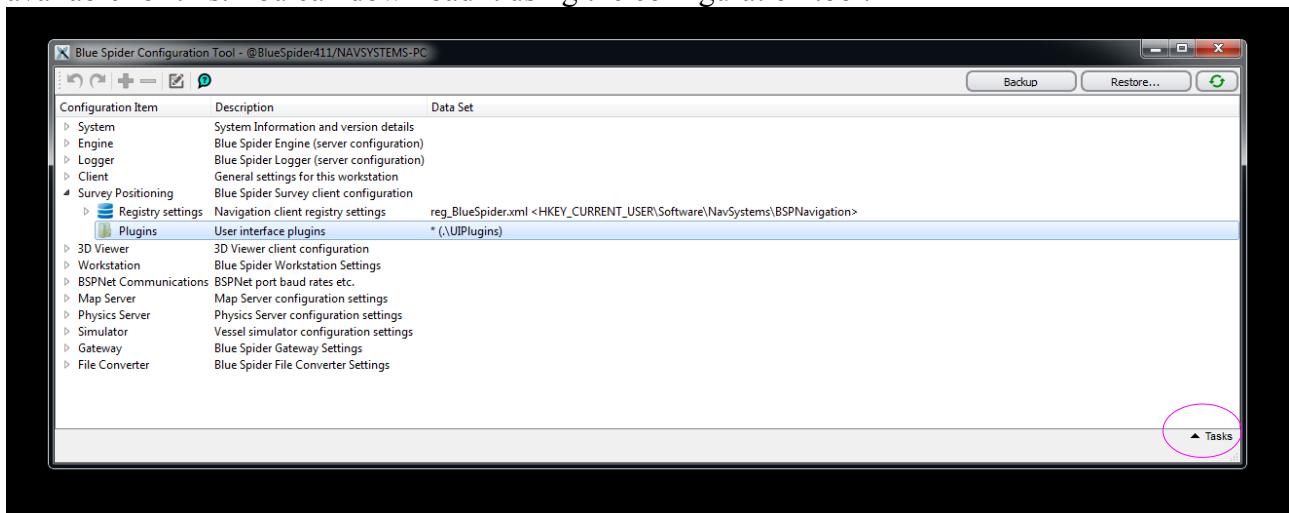
When you first run Survey Positioning you will see a little notification which only appears if you don't have any chart layers loaded. For evaluation we recommend you download the GEBCO 30 arc second world bathymetry data set. This provides a useful backdrop for all chart data. The 3D viewer in particular needs a world bathymetry dataset and the GEBCO data is absolutely suitable for this purpose.

All you need to do is follow the instructions shown in the message shown bottom left and this step is very easy and fully automated. It will take a few minutes as the GEBCO data is very large. If you are using vessel internet then you might wish to download manually instead.



Other things to try

If you are interested in using Blue Spider for cable operations then note that there is a plug-in available for this. You can download it using the configuration tool.



Select Plugins under Survey Positioning and then press the **Tasks** button and follow the instructions.

